

VOLKSWAGEN

AKTIENGESELLSCHAFT



Betriebsanleitung

VAS 6767/2

Operations manual

VAS 6767/2



en – Contents

1.	Symbols used	9
1.1	Symbols in this documentation	9

2.	Update of vehicle data with Beissbarth Key Card	9
-----------	--	----------

3.	Create a user account	10
-----------	------------------------------	-----------

4.	Activate your Key Card	10
-----------	-------------------------------	-----------

5.	Installation of vehicle data updates	11
-----------	---	-----------

1. Symbols used

1.1 Symbols in this documentation

Symbol	Designation	Explanation
!	Attention	Warns about possible property damage.
i	Information	Practical hints and other useful information.
1. 2.	Multi-step operation	Instruction consisting of several steps.
>	One-step operation	Instruction consisting of one step.
⇒	Intermediate result	An instruction produces a visible intermediate result.
→	Final result	There is a visible final result on completion of the instruction.

2. Update of vehicle data with Beissbarth Key Card

i The key card enables the licensing of the latest vehicle data updates for Volkswagen Group vehicles.

> Scratch off the code on the back.

i This allows you to license the latest vehicle data for 365 days after activation.

! Keep this Key Card safe!

The key card can be used for the following Beissbarth devices:

- V.A.G 1813
- V.A.G 1813A
- V.A.G 1995
- VAS 5080
- VAS 6141
- VAS 6595
- VAS 6767
- VAS 6767A

! Note: Installing the latest vehicle data requires one of the following Windows versions:

- Windows POSReady7, Windows 10, or Windows 11

To find out your current Windows version:

1. Press [Windows logo key] + [R].
2. Type “winver” in the new window.
3. Then select **OK**.

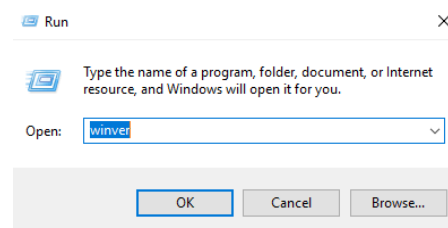



Fig. 1: Identify Windows version



Fig. 2: Example of installed Windows version

3. Create a user account

1. Open the website "www.beissbarth.com/keycard".

 If you already have an active user account, continue with Chapter 4 "Activate Key Card".

2. If you do not yet have a user account, register by clicking on "**Create user account**".

Login

Customer number

Password


Log in

[Forgotten password?](#)

[Create a user account?](#)

Fig. 3: Login Beissbarth Software Center

3. Select your relevant **region**, **country** and your **local service partner**.

 If this is not listed, skip this step by clicking on the box at the bottom.

Create a user account


Please first select your **country** and then you can select a **dealer**. If your country is not in the list, click on "Dealer country not in list".


- North America
- Asia Pacific, Australia
- Eastern Europe
- Middle East, Africa
- Western Europe
- Latin America
- Germany, Austria, Switzerland (DACH)

Dealer country not in list (the dealer assignment will be made subsequently by the Beissbarth Automotive Testing Solutions GmbH). Mandatory fields are marked with *.


Fig. 4: Region selection

4. Click on "**Continue**".
5. Enter your contact details for your user account and assign a password.
6. Continue by clicking on "**Create user**".
7. Check your email inbox of the previously provided email address and confirm the link within 12 hours.

 In this email you will also receive your **customer number** for registration.

 Please also check your spam folder. If you have not activated the link within 12 hours, you will have to register again.

8. Log in with your **customer number** and **password** using the link in step "1".


 If you have forgotten your password, you can reset it using "**Forgot password**".

4. Activate your Key Card

1. Log in to the Beissbarth Software Center with your **user name** and **password** using the following link: www.beissbarth.com/keycard

2. Press "**Key Codes**"

3. Enter the scratched-off code on the back of your key card.

 Pay attention to upper and lower case letters!

4. Continue by clicking "**Send**".

Key code

Please enter your key code correctly. Please note the **upper case** and **lower case lettering**.

Key code

Send

Fig. 5: Example Key Code


 In this step you will need the serial number of your device. You can find this by clicking on the question mark "?" and then on "**About...**".



Fig. 6: Identification of your serial number

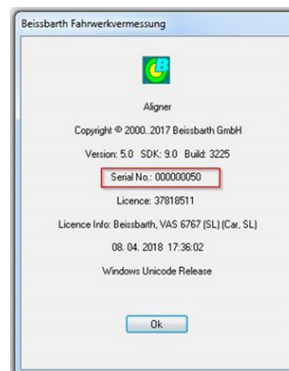


Fig. 7: Example serial number

The serial number consists of a product identifier and a seven-digit device number.

Product identifier (Two characters)		Device number (Seven digits)		Serial number
C2	+	0012345	=	C2 0012345

Tab. 1: Example product identifier and device number

To activate your key code:

5. Select the product identifier of your wheel alignment device
6. Enter your device number.

! Make sure that both the product identifier and the device number have been entered correctly. If entered incorrectly, the key code cannot be used!

Product identification

C2

Device number

0012345

Send

Fig. 8: Example product identifier and device number

7. After entering, continue by clicking on **"Send"**.

ii Re-entering the customer data in the next step is optional.

8. Click on **"Continue"**.

In the next step you can download your license file:

- The license file (.lic) is required for the installation.

Installation file

Volkswagen_AG_42.00.exe

Download License:

[C20012345_153502.lic](#)

Fig. 9: Example database version and license download link

ii This license is only valid for the installation of the version specified in the file name (Shown in example: Version 42.00). You can obtain the newest installation file via the Volkswagen ServiceNet.

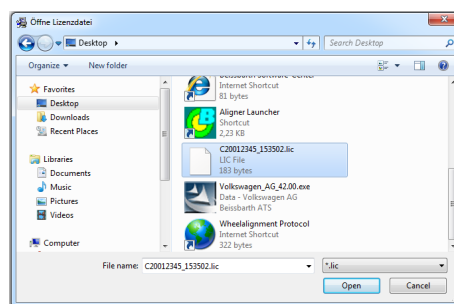
ii Your key code is valid for 365 days from first activation. During this period, you can generate a new license for all following vehicle data updates in the Volkswagen Service Net. Every new version requires a new license file for installation. After the 365 days have expired, you will need to purchase a new key card to license vehicle data updates. You can access your already licensed versions at any time via your customer account.

5. Installation of vehicle data updates

! The latest program version and the latest vehicle data update can be found in the Volkswagen ServiceNet. Please ensure that the program version is up to date before proceeding with the installation of the vehicle data.

1. Start the installation of the vehicle data by double-clicking on the downloaded file "Volkswagen_AG_XX.00.exe"
2. Follow the instructions in the installation.

ii During the installation you will be asked for a license file. Here you select the ".lic" file that you received from the Beissbarth Software Center.



3. After installation, restart the PC.

➔ Your vehicle data is now ready for use.

Volkswagen Aktiengesellschaft
K-AVO-LW
Konzern After Sales – Group Service,
Literatur und Systeme
Werkstattausrüstung
Brieffach 011/4915
38442 Wolfsburg

Nur zum internen Gebrauch
Technische Änderungen vorbehalten
Stand 01/2024

Volkswagen Aktiengesellschaft
K-AVO-LW
Group After Sales – Group Service,
Literature and Systems
Workshop Equipment
Letter box 011/4915
38442 Wolfsburg

For internal use only
Technical amendments possible
Status 01/2024

Beissbarth Automotive
Testing Solutions GmbH
Hanauer Straße 101
80993 München (Bayern)
Deutschland

Tel. +49-89-149 01-0
www.beissbarth.com
sales@beissbarth.com

Beissbarth Automotive
Testing Solutions GmbH
Hanauer Straße 101
80993 Munich (Bavaria)
Germany

Tel. +49-89-149 01-0
www.beissbarth.com
sales@beissbarth.com