

Table of Contents – English (USA)

General Information	56
General Safety Instructions	57
Operating Instructions	58
Inspection and Maintenance	60
Declaration of Conformity	61

1 General Information

Product Name:	Gearbox support accessory
Product Type:	Load holding device
Product Number:	T40407
Weight:	30 kg
Max. Load Capacity:	250 kg
Static Test Coefficient:	3.0

Intended Use:

- ▶ The gearbox support accessory supports and rotates a gearbox on the mounting trestle VAS 6095/ VAS 6095A in accordance with the workshop manuals of the Volkswagen Group brands.

Terms of Use:

- ▶ For qualified workshop personnel only.
- ▶ Use only for work approved by the Volkswagen Group.
- ▶ Use only at ambient air temperatures between -10 °C and +60 °C.
- ▶ Do not use in corrosive environments (e.g. acidic, caustic).
- ▶ Use only for a gearbox up to 250 kg.
- ▶ Do not hold or lift any people or animals.
- ▶ Use the gearbox support accessory only with the mounting trestle VAS 6095/VAS 6095A.
- ▶ Do not climb on the mounting trestle.
- ▶ Use the gearbox support accessory with the mounting trestle VAS 6095/VAS 6095A on level, even, and stable ground.
- ▶ May be used by one person alone.

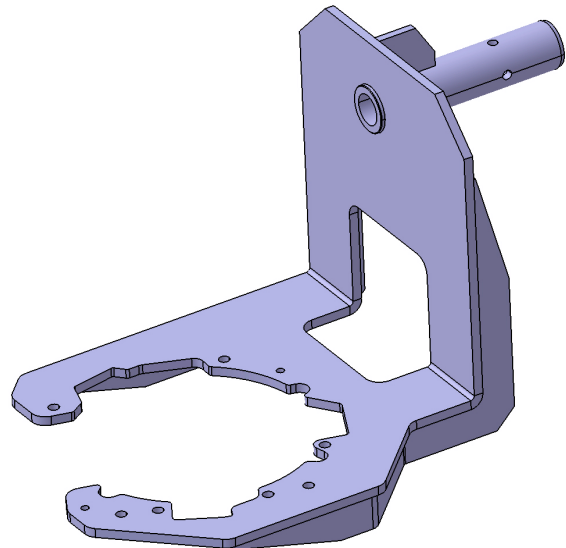


Figure 1: Gearbox support accessory T40407

Included in delivery

Product Name:	Quantity:
Gearbox support accessory	1
Flange screw DIN 6921, M12 x 50 10.9, zinc coated	2
Flange screw DIN 6921, M12 x 90 10.9, zinc coated	1
Flange screw DIN 6921, M12 x 130 10.9, zinc coated	2
Flange nut DIN 6923, M12, zinc coated	5

2 General Safety Instructions

WARNING

Read and follow all safety notes and instructions!

Failure to follow the safety instructions could result in serious injuries and severe damage to materials.

Observe and follow the safety notes below.

-
- ▶ The load holding device has been specifically constructed for its intended use. The safety of the load holding device can no longer be ensured if it is misused or modified in ways not expressly approved by the manufacturer. Serious personal injuries or severe damage to materials could occur.
 - ▶ Ensure that each person using the load holding device is familiar with these instructions and can access them at all times.
 - ▶ Ensure that all users are also familiar with the instructions of the additional tools and workshop equipment that are necessary for the work.
 - ▶ Carefully read and adhere to the instructions in the technical safety information of the Volkswagen Group brands.
 - ▶ Wear safety shoes (in accordance with ISO 20345, S2).
 - ▶ Wear protective gloves in order to avoid cuts.
 - ▶ Position hands and feet so as to avoid potential crushing hazards.
 - ▶ Use the load holding device only for work approved by the Volkswagen Group.
 - ▶ Use the load holding device only with the accessories approved by the Volkswagen Group.
 - ▶ Do not exceed the maximum load capacity of 250 kg.
 - ▶ Use the gearbox support accessory only with the mounting trestle VAS 6095/VAS 6095A.
 - ▶ The mounting trestle VAS 6095/VAS 6095A may be used by one person alone.
 - ▶ Move the mounting trestle VAS 6095/VAS 6095A when a load is on it only in the lowest position.
- ▶ Ensure that the path for the mounting trestle VAS 6095/VAS 6095A is clear and easily visible.
 - ▶ Move the load slowly and smoothly.
 - ▶ Observe the gearbox support accessory and the load during all movements.

3 Operating Instructions

1. Inspect the mounting trestle and its accessories for visible damage before each use (e.g. leaks in the hydraulic cylinder, cracked parts, or cracks on welded seams, defective wheels). Do not use the mounting trestle or accessories if damaged or in poor condition.

WARNING

Damaged parts could cause loads to fall!

Falling parts could result in serious personal injury or severe damage to materials.

- ▶ Inspect the mounting trestle and its accessories for damage before each use.
- ▶ Take the mounting trestle or its accessories out of operation and secure them against unauthorized use if damaged or in poor condition.

2. Secure the mounting trestle VAS 6095/VAS 6095A from rolling by locking the brakes on the castor wheels.
3. Disengage the safety lock lever and fully depress the pedal on the mounting trestle VAS 6095/VAS 6095A until the hydraulic cylinder is in the lowest position (see the instructions for VAS 6095 or VAS 6095A).
4. If necessary, remove the clamping rails and spacer pins or the universal support arm VAS 6095/1 from the mounting trestle (see the instructions for VAS 6095 or VAS 6095A).
5. Attach the gearbox support accessory to the gearbox in accordance with the workshop manuals of the Volkswagen Group brands.

Secure the gearbox to the gearbox support accessory with the M12 flange screws and M12 flange nuts included in delivery. Tighten the M12 flange nuts with a torque of 35 Nm.

6. Attach the gearbox to the mounting trestle VAS 6095 or VAS 6095A.

Use a workshop crane that has been approved by the Volkswagen Group, e.g. VAS 6100. Remove the workshop crane only after the gearbox has been secured on the mounting trestle.

WARNING

Suspended loads could cause serious personal injury!

Loads could swing out or drop while being lifted and result in serious personal injury.

- ▶ Stay out from under suspended loads and from the load's swinging range.

7. Push the support flange on the gearbox support accessory through the flange plate's center hole and into the hollow shaft until the end stop.

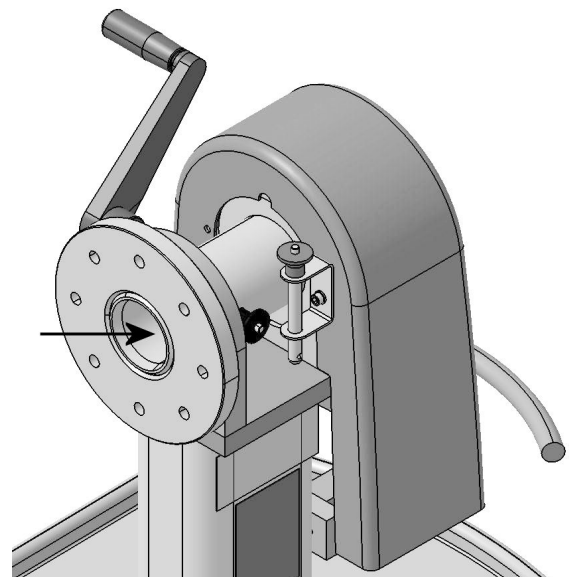


Figure 2: Flange Plate and Hollow Shaft

8. Secure the gearbox support accessory to the mounting trestle VAS 6095/VAS 6095A with the suitable ball lock pin in the hollow shaft as described in the instructions for the mounting trestle.

WARNING

Danger of falling loads!

Attaching the gearbox support accessory to the mounting trestle incorrectly could cause the load to swing out or slip. This could result in serious personal injury or severe damage to materials.

- ▶ Ensure that the support flange is inserted all the way in the hollow shaft of the mounting trestle.
- ▶ Ensure that the gearbox support accessory is secured in the hollow shaft with a ball lock pin.
- ▶ Remove the ball lock pin only after the gearbox and the gearbox support accessory are secured to the workshop crane.

9. If necessary, secure the gearbox support accessory to the flange plate with suitable M14 screws (130 Nm) (see the workshop manual of the Volkswagen Group brands). Use only M14 screws that are longer than the combined width of the accessory and vehicle part.

WARNING

Danger of falling loads!

The load could fall if the accessories have not been attached to the mounting trestle correctly or if the load has not been secured to the mounting trestle or the accessories correctly. This could result in serious personal injury or severe damage to materials.

- ▶ Ensure that the accessories have been attached to the mounting trestle correctly.
- ▶ Ensure that the vehicle part has been attached to the mounting trestle or the accessories correctly. Adhere to the torque specifications in the workshop manuals of the Volkswagen Group brands.

10. Remove the workshop crane, e.g. VAS 6100, from the gearbox.

11. Ensure that the gearbox support accessory can be rotated on the mounting trestle VAS 6095/VAS 6095A.

CAUTION

Crushing Hazard!

Potential crushing hazards could occur between the load and VAS 6095/VAS 6095A when moving the load.

- ▶ Position hands and feet so as to avoid potential crushing hazards when moving the load.

12. Move the gearbox to the desired working height by pressing the pedal on the mounting trestle several times (see the instructions for VAS 6095/VAS 6095A).
13. Turn the crank handle to rotate the load (see the instructions for VAS 6095/VAS 6095A).
14. Perform further work as described in the workshop manuals.
15. Disengage the safety lock lever and fully depress the pedal on the mounting trestle to lower the vehicle part (see the instructions for VAS 6095/VAS 6095A).
16. Secure the gearbox support accessory from falling when removing the gearbox support accessory from the gearbox.
17. Ensure that all parts of the special tool have been removed after completing the service and maintenance work.
18. Store the gearbox support accessory in a suitable location.

4 Inspection and Maintenance

Inspect the mounting trestle and its accessories for visible damage before each use (e.g. leaks in the hydraulic cylinder, cracked parts, or cracks on welded seams, defective wheels). Do not use the mounting trestle or accessories if damaged or in poor condition.

Replacement parts are available upon request. Use only original replacement parts.

Contact your first-level support representative with any queries.

NOTICE

Modifications to this product which have been expressly approved by the manufacturer will void any warranty. The manufacturer assumes no liability for personal injuries or damage to materials which occur as the result of improper use of the product.



Declaration of Conformity with the Machinery Directive 2006/42/EC, Annex II 1A

Manufacturer:	Bosch Automotive Service Solutions GmbH Am Dörrenhof 1 85131 Pollenfeld-Preith Germany
Authorized to compile the technical documents:	Bosch Automotive Service Solutions GmbH Am Dörrenhof 1 85131 Pollenfeld-Preith Germany
Product Name:	Gearbox support accessory
Product Type:	Load holding device
Product Number:	T40407

We hereby declare that the product described above complies with the relevant clauses of the 2006/42/EC Machinery Directive.

Any modification to the product not expressly approved by the manufacturer will void the validity of this declaration.

The following harmonized standards have been applied:

EN ISO 12100:2010	Safety of machinery — General principles for design — Risk assessment and risk reduction
EN 13155:2003+A2:2009	Cranes — Safety — Non-fixed load lifting attachments

Pollenfeld, 2019-12-06

Place, Date

Carsten Henkel, Managing Director